



**Status:** Move-in Ready



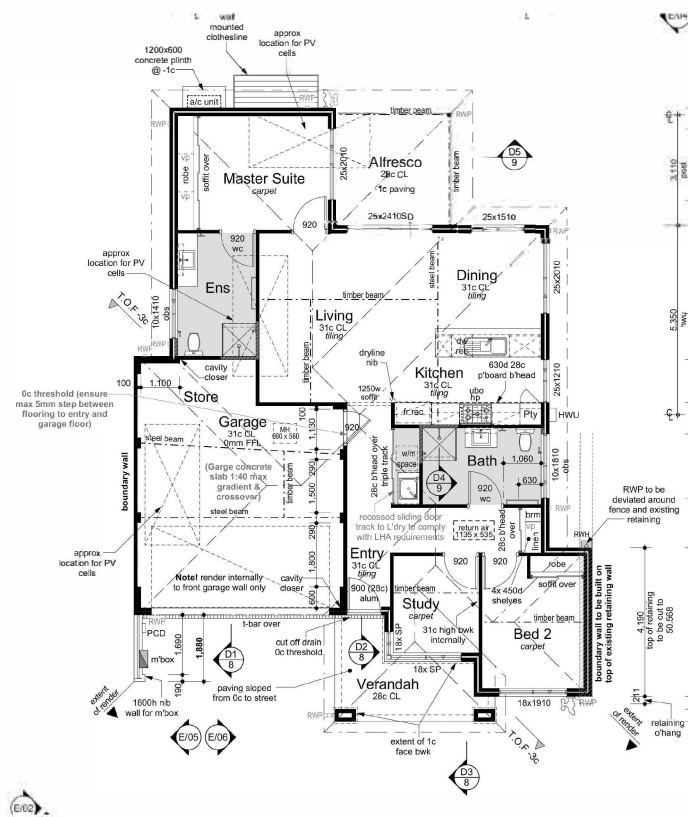
## 47 Parmelia Close, Ellenbrook

**Offers from \$650,000**

**Land size 299m<sup>2</sup>**

**Frontage 13m**

- Built by Dale Alcock Projects
- Designed to Livable Housing Gold Standard
- Ducted air conditioning
- 3KW solar power system
- High 31c ceilings
- Front and backyard landscaping included
- Tiling and carpets throughout
- Strata levies of \$604.75 (inc. GST) per quarter



**For more information:**



**Joshua Knapton**

0487 700 446

info@ellengardens.com.au

**ellen**  
gardens

Images for illustrative purposes only. Floorplan is based on the selected home design. Please contact our Sales Team to view the final contract drawings for this lot.

**Ellen Gardens**

**Satterley**