

Status: Move-in Ready

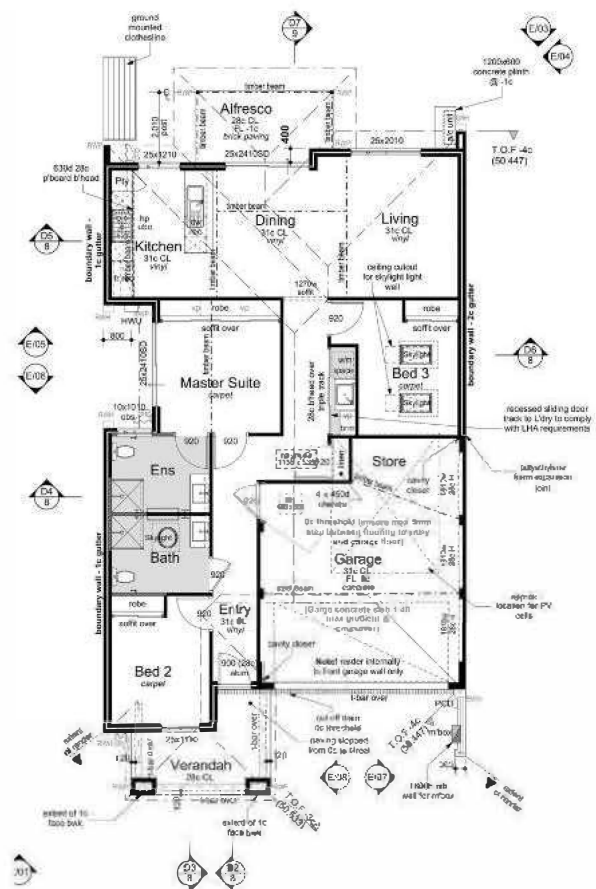


45 Parmelia Close, Ellenbrook

Offers from \$640,000

Land size 242m² Frontage 10.5m

- Upgraded kitchen with 900mm appliances
- Built by Dale Alcock Projects
- Designed to Livable Housing Gold Standard
- Ducted air conditioning
- 3KW solar power system
- High 31c ceilings
- Front and backyard landscaping included
- Vinyl Flooring and Carpets throughout
- Strata levies of \$531 (inc. GST) per quarter



For more information:



Joshua Knapton

0487 700 446

info@ellengardens.com.au

ellen
gardens

Images for illustrative purposes only. Floorplan is based on the selected home design. Please contact our Sales Team to view the final contract drawings for this lot.

Ellen Gardens

Satterley