



Status: Move-in Ready

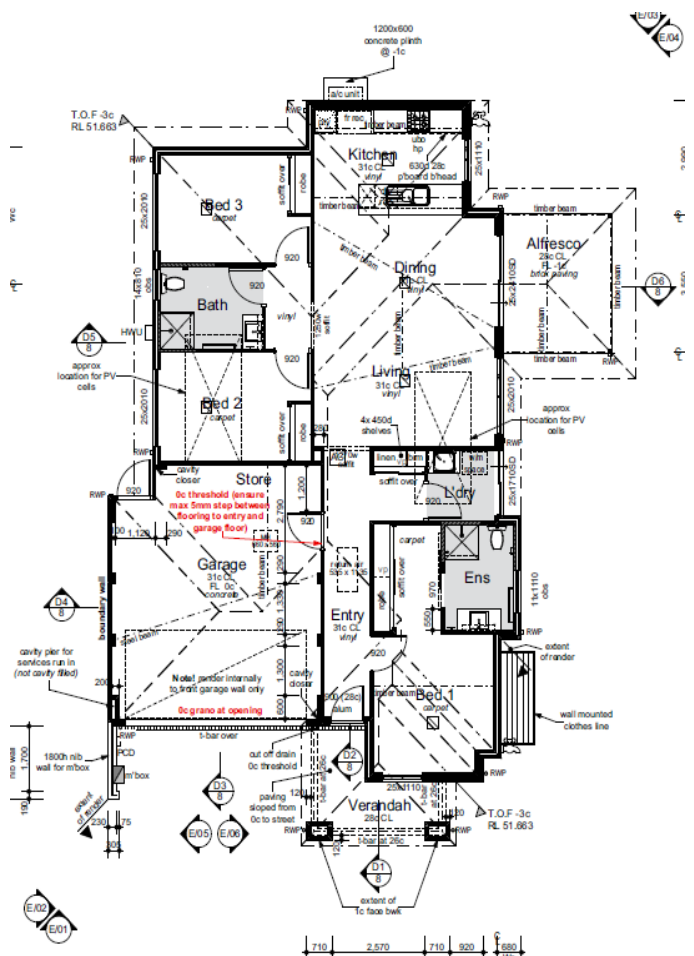


## 21 Parmelia Close, Ellenbrook

Offers from \$780,000

Land size 391m<sup>2</sup>

- Built by Dale Alcock Projects
- Designed to Livable Housing Gold Standard
- Ducted air conditioning
- 3KW solar power system
- High 31c ceilings
- Front and backyard landscaping
- Vinyl flooring throughout
- Strata levies of \$531 (per quarter)
- Water rates \$537.10 (1st July - 28th February)



### For more information



**Joshua Knapton**

0487 700 446

info@ellengardens.com.au

