

Status: Move-in Ready



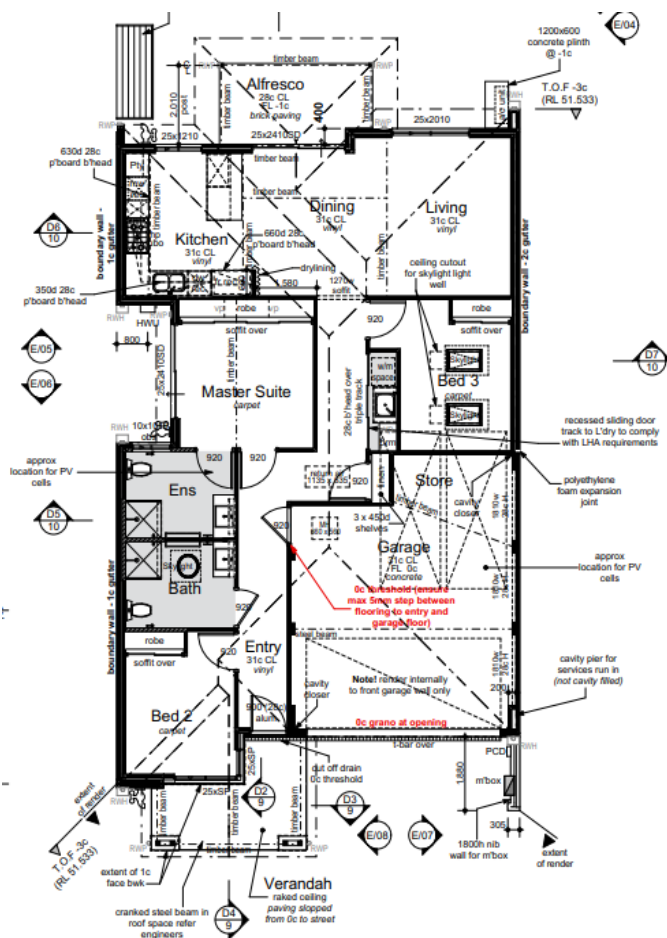
23 Parmelia Close, Ellenbrook

Offers from \$740,000

Frontage 10.5m

Land Size: 257m²

- Upgraded kitchen with 900mm appliances and overhead cupboards
- Built by Dale Alcock Projects
- Designed to Livable Housing Gold Standard
- Ducted air conditioning
- 3KW solar power system
- High 31c ceilings
- Front and backyard landscaping
- Vinyl flooring throughout
- Strata levies of \$398.25 (inc. GST.) per quarter
- Water rates \$537.10 (1st July - 28th February)



For more information



Joshua Knapton

0487 700 446

info@ellengardens.com.au

